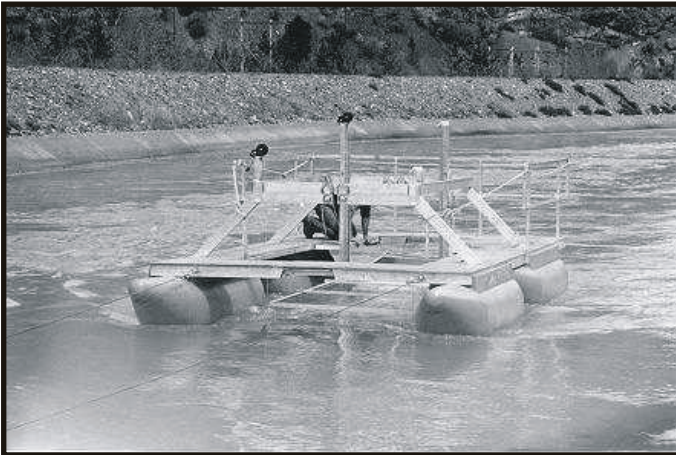
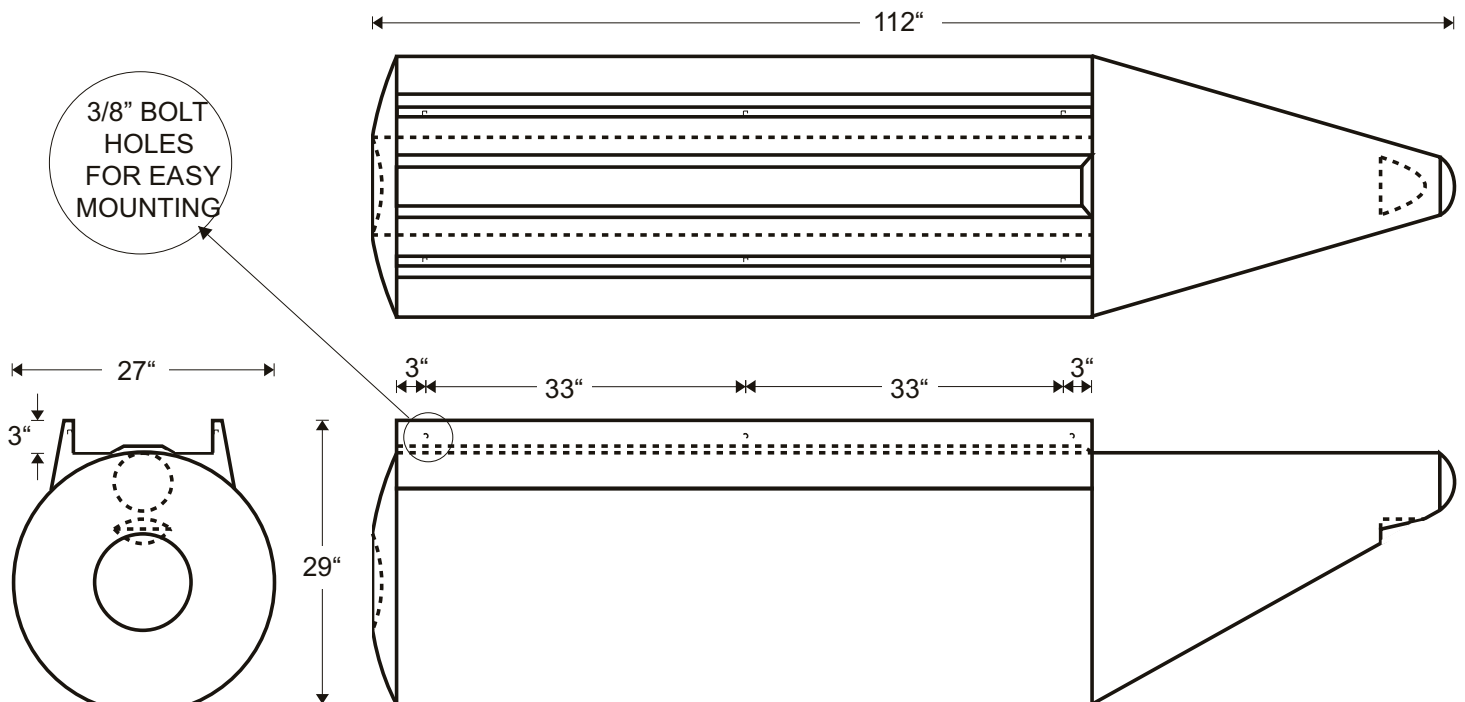


PONTOON



- HEAVY DUTY, ONE-PIECE, SEAMLESS POLYETHYLENE CONSTRUCTION
- EXCELLENT RESISTANCE TO IMPACT AND COLD WEATHER STRESS
- WON'T CRACK, RUST, OR CORRODE
- U.V. INHIBITORS PROVIDE PROTECTION AGAINST SUNLIGHT
- PORTABLE & LIGHT WEIGHT
- DIMENSION: 27" DIAMETER x 112" LONG
- WEIGHT: 88 LBS.
- LOAD CAPACITY: 1500 Lbs.
- 2 YEAR WARRANTY



*All Measurements are approximate

ZEEBEST PLASTICS

35 Calder Place, St. Albert, AB T8N 5A6
 Ph: 780.447.5222 Fax: 780.455.9448
 www.zeebest.com sales@zeebest.com